

An abstract painting of a horse's head, rendered in vibrant, expressive brushstrokes. The colors are a mix of deep blues, purples, greens, and oranges, set against a background of lighter, more muted tones. The horse's head is the central focus, with its mane and tail flowing outwards. The overall style is dynamic and energetic, with a strong sense of movement and color. The text 'FEN HSU' is overlaid in the center in a clean, white, sans-serif font.

FEN HSU

F E N H S U



Rooted, 2006
Pastel on paper
10 x 8 inches

ROOTED

Though the idea of rootedness seems old-fashioned, much is to be said for having a sense of place and belonging.

The Pacific Northwest has been a wonderful home and playground for myself and my family. My recent works are inspired by such places as Seward Park in Seattle, the rainforests and communities of the Olympic Peninsula, and the majestic forests of British Columbia.

The dynamic forms and emotive colors in my paintings evoke many themes including the ecosystem of trees and the natural environment. There is also a sense of the strength derived from connection and adaptation.

I rediscovered my early artwork recently. Sketches contributed to my junior high school yearbook, pastel portraits made in San Francisco as a teenager, paintings and pastel renderings made in travels — found in a dusty portfolio — all reminders of my joy in making art.

It is my hope that the selected works presented here speak of the consciousness of living systems and affirm the creative spirit.



Cherry Tree, Seward Park

Blush of the Cherry Blossoms, 2019

Acrylic on canvas

48 x 20 inches, 122 x 51 cm





Wisdom of the Rooted, 2019
Acrylic on canvas
48 x 20 inches, 122 x 51 cm



Flying Through Leaves, 2019

Acrylic on panel

12 x 16 inches



Autumn Canopy, 2019

Acrylic on panel

12 x 16 inches





Purple Haze Lavender Farm, 2019

Acrylic on canvas

12 x 12 inches

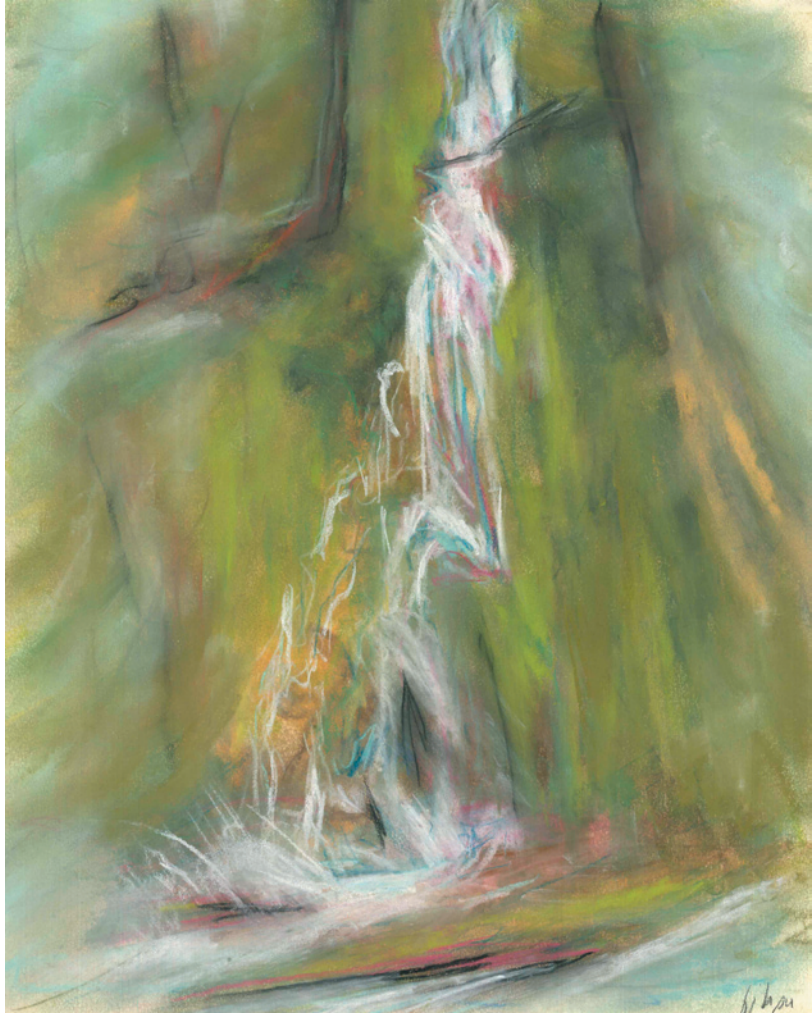


Resting on a Bed of Moss, 2018
Pastel on paper
12 x 14 inches





Madison Falls, 2019
Pastel on paper
12 x 9 inches



Tinted Clouds
Acrylic on canvas
36 x 36 inches



M a u i

Oil on canvas

9 x 12 inches



Flowery Hat

Pastel on paper

12 x 9 inches



Gia (after Gia Caranji)

Pastel on paper

12 x 10 inches



Cowboys (after Paul Newman and Robert Redford in the movie Butch Cassidy and the Sundance Kid)

Charcoal on paper

9 x 12 inches



Beverly (after Beverly Johnson)

Pastel on paper

11 x 8.5 inches



CURRICULUM VITAE

EXHIBITIONS

2021, April, Wildness, EarthActionInitiative.org
Online Exhibit

2020, October 10 to December 1, Lynnwood City
Hall, 2 person show

2020, January to June, Contemporary Northwest
Landscapes group show at the Lynnwood
Convention Center in Lynnwood, WA

COMMUNITY AND OTHER CREATIVE WORK

2012, Seward Park Tree Ambassador leading tree
walks in Seattle, WA

2010 , Contributing writer to Momentum
Magazine, a bicycle lifestyle magazine

2010, Fashion contributor to the Great City Fete
Du Flaneur celebration event

2010, Presenter at Blue Festival along with the
Mangrove Action Project to raise awareness of
the health of the oceans

2009, Presenter of up-cycled bicycle fashions at
the Sustainable Ballard Festival



Photo credit: Mindy Weinberg

CONTACT AND SOCIAL MEDIA

Instagram @artsywizz

YouTube ArtsyWiz

Website artsywiz.com

artsywiz.wixsite.com/fenhsu

Facebook facebook.com/fenjhsu

An abstract painting featuring a central, dark, textured form that resembles a tree trunk or a rock. This central element is surrounded by vibrant, swirling colors including deep blues, purples, greens, and oranges. The background is a mix of light, airy washes of white and pale blue, with some darker, more saturated areas. The overall style is expressive and gestural, with visible brushstrokes and a sense of movement and energy.

artsywiz.com